

Direct variable speed drive for quiet, reliable operation. Available for normal or explosion proof environments.

Low rpm increases reliability, reduces wear and reduces operating costs.

Chemical additive petcock for adding emulsion breakers, pH adjustment, etc.

Rugged stainless steel construction. Simple design facilitates use of special alloys when needed.

Compact and portable, high throughput for size and weight.

Easy to maintain.



Innovative Liquid-Liquid Centrifugal Processing Solutions

Patented technology and long residence time (high g-seconds) enhances operation.

Clean in-place capability for in-situ cleaning without disassembly.

Two inlet ports allows unit to act as both a contactor and separator.

Stable hold-up volume that maintains equilibrium.

Self-priming units can be directly connected for multi-staging.

Tolerant design accommodates ratio changes, flow changes and flow interruptions.

Exceptional Quality and Value

***Advanced Technology
for a Wide Range of Applications***

Low Maintenance and High Reliability

World-Class Service and Support



A Unique Combination of Quality and Value



CINC's compact, powerful centrifuges perform a variety of separation, extraction, washing and reaction operations. Designed to effectively operate at a lower RPM, CINC centrifuges last longer and require less maintenance, yet accommodate flow rates up to 200 gallons (757 liters) per minute.

Our units are designed, manufactured and rigorously tested in-house, ensuring the highest standards of quality and craftsmanship. In compliance with the requirements of ISO 9000 and NQA-1, we manufacture centrifuges to cGMP and FDA standards, including CE and PED directives and ATEX 100 certification.

- **Advanced Technology**
- **World-Class Service & Support**
- **Commitment to Environmental Safety**



775-887-0787 • Fax 775-887-0790 • www.CINCindustries.com

Advanced Technology Applied Around the World

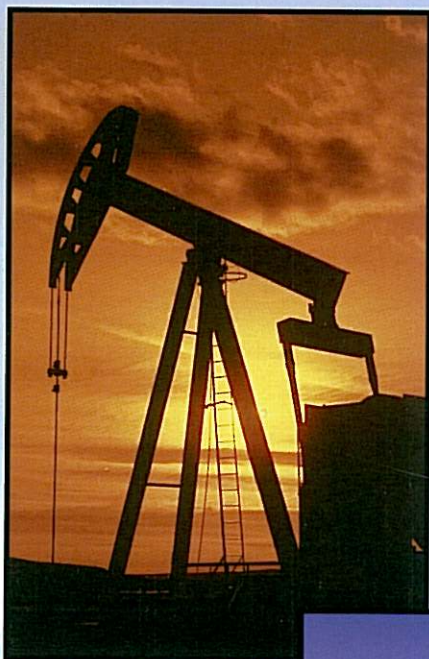
Chemical

- Polymer feed stocks and production
- Butadiene and styrene resins
- Organic peroxides



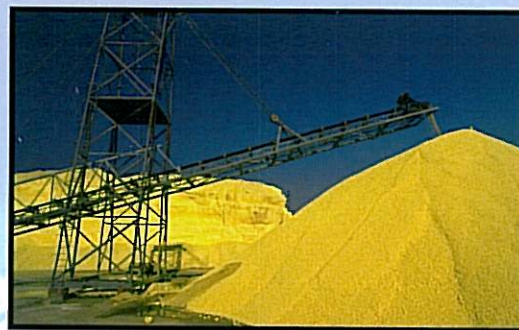
Environmental

- Oil spill clean-up
- Groundwater remediation
- Wash water recycling



Mining & Metals Recovery

- Solvent extraction of various metals
- Solvent recovery and recycle
- Wastewater separations



Petroleum

- Acid-flowback
- Well completion fluid recovery
- Produced water processing
- Oil-dehydration



Food & Nutrition

- Isoflavones
- Edible oils
- Flavor extractions



Separation • Washing • Extraction • Reaction

A Clear Solution

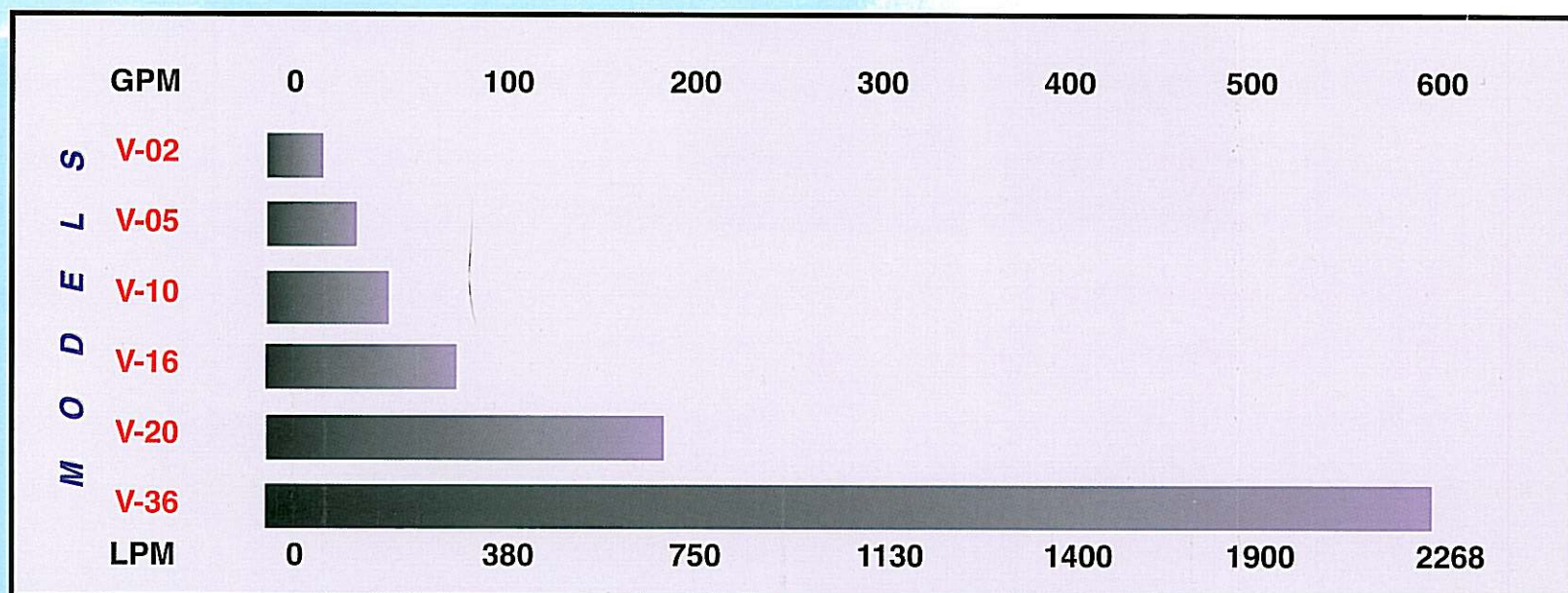
CINC self-priming centrifuges provide both mixing and separation in a single, compact unit and are easily configured to handle multi stage processes.

Features include:

- **Process flow rates between 0.5 to 200 gallons (1.9 to 757 liters) per minute**
- **Two inlet design for introducing extractants, solvents or washing agents**
- **Effective separation/extraction utilizing only 200-1000 g's**
- **Annular mixing zone for efficiently mixing feed streams**
- **Low mixing and direct feed options for shear sensitive fluids**
- **Adjustable heavy phase weir and variable speed motor for handling specific gravity differences, whether pumped or gravity fed**
- **Accommodates continuous changes in input ratios without adjustment**
- **Automatically controls variable flow rates and flow interruptions**
- **Handles input temperatures from freezing to boiling**
- **Rugged stainless steel construction. Other corrosion resistant alloys also available.**
- **Clean in Place (CIP) rotor system for high reliability and low maintenance**
- **Simple direct drive with sealed bearings and only one moving part**
- **Direct drive packages for quiet operation and flexible configuration**



Operating Range of CINC Equipment



Clean-in-Place (CIP) Rotor: A Simple, Seamless Process

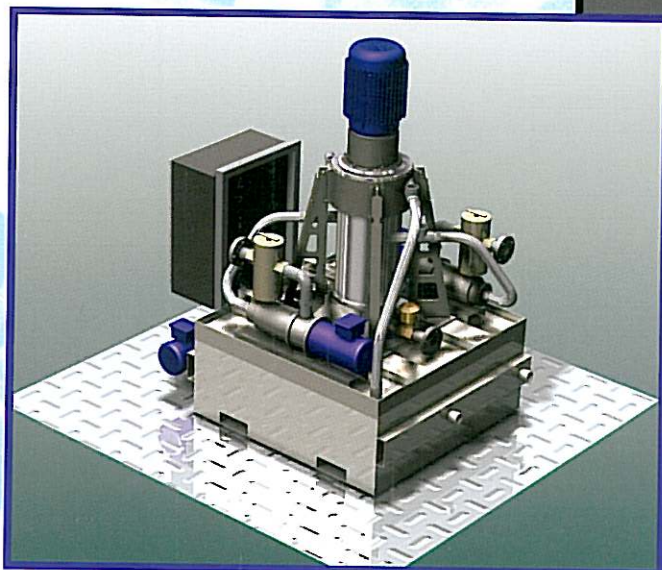
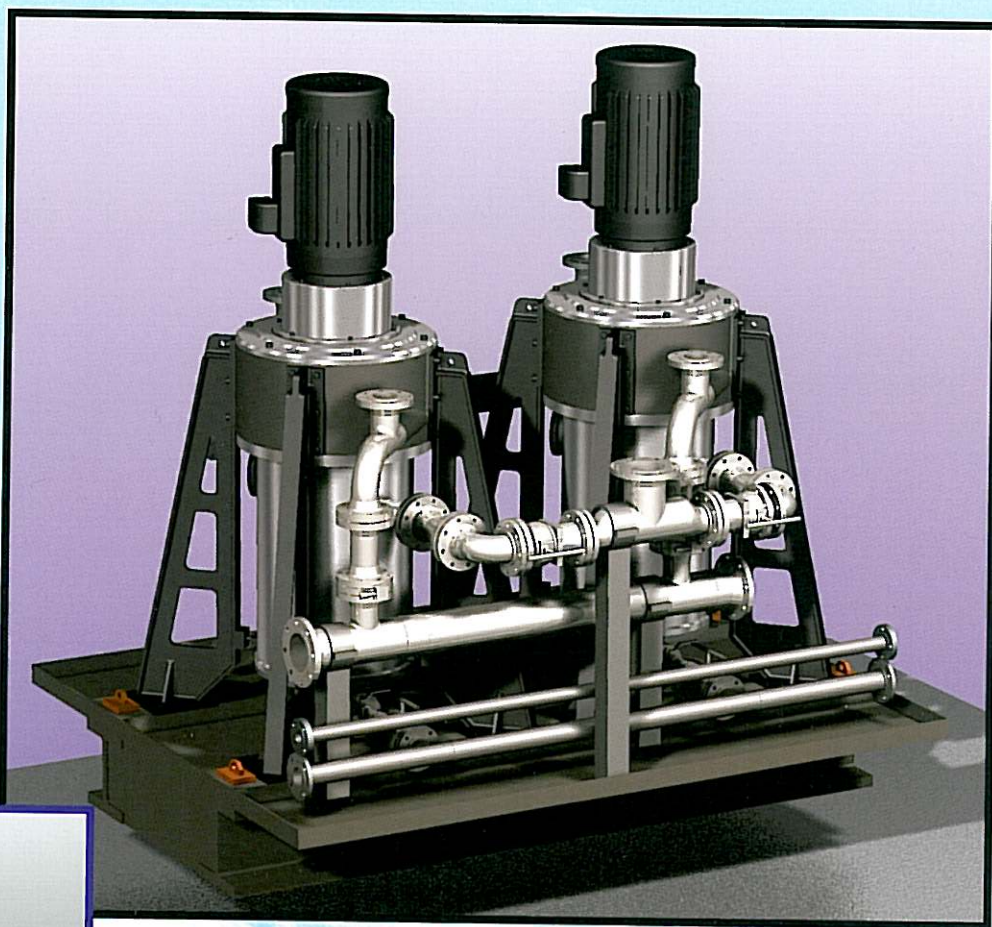
CINC's patented Clean-in-Place (CIP) design ensures easy removal of accumulated solids from the inside wall of the rotor and is ideal for applications that require thorough rotor washing to avoid cross contamination.

Clean-in-Place rotors are available on all standard CINC centrifuges from the Model V-05 to the Model V-20. Cleaning takes only minutes and requires no disassembly, and the entire process can be automated to avoid flow interruptions.

Ensuring a Clean and Safe Environment

Our commitment to excellence includes designing and manufacturing solutions that consume less energy, produce less waste and ensure a safe environment for our customers and their communities.

CINC Industries products are guaranteed to run efficiently and stand the test of time.



Separation • Washing • Extraction • Reaction

CINC Centrifuge Specifications

CINC centrifuges are available in a wide range of sizes, from R&D and pilot to full production scale units, and our experienced support team can assist you with finding custom solutions to meet your specific needs.

Model	V02	V05 TAH/CIP	V10 TA/CIP	V10 TAH/CIP	V16 CIP	V20 CIP
Rotor Size	2.0" (5.1 cm)	5.0" (12.7 cm)	10.0" (25.4 cm)	10.0" (25.4 cm)	16.0" (40.6)	20.0" (50.8 cm)
Throughput (Flow Rate Range)	0.0 - 0.5 gpm (0.0 - 1.9 L/min)	0.5 - 5.0 gpm (1.9 - 19.0 L/min)	1 - 30 gpm (3.8 - 110 L/min)	1 - 30 gpm (3.8 - 110 L/min)	10 - 90 gpm (38 - 340 L/min)	30 - 200gpm (110 - 750 L/min)
Footprint	9" x 9" (23cm x 23cm)	12" x 12" (30.5cm x 30.5cm)	24" x 24" (61cm x 61cm)	24" x 24" (61cm x 61cm)	48" x 48" (122cm x 122cm)	60" x 60" (152cm x 152cm)
Height (Includes Motor)	17" to 19" (43 to 48 cm)	36" to 44" (92 to 112 cm)	60" to 72" (152 to 183 cm)	70" to 82" (180 to 208 cm)	80" (203 cm)	112" (285 cm)
Process Connections Standard Optional	3/8" NPT	1" NPT 1" ANSI /DIN Flange	2" NPT 2" ANSI /DIN Flange	2" NPT 2" ANSI /DIN Flange	4" NPT 4" ANSI /DIN Flange	4" NPT 4" ANSI /DIN Flange
Power Requirement	1/8 hp (0.12 kW)	2 hp (1.5 kW)	7.5 hp (5.5 kW)	7.5 hp (5.5 kW)	30 hp (22 kW)	60hp (44 kW)
Electrical Options	110 VAC 220 VAC (1 or 3 Phase) 440 VAC (3 Phase)	220 VAC (1 or 3 Phase) 440 VAC (3 Phase)	220 VAC (1 or 3 Phase) 440 VAC (3 Phase)	220 VAC (1 or 3 Phase) 440 VAC (3 Phase)	220 VAC/440 VAC (3 Phase)	220 VAC/440 VAC (3 Phase)
Material of Construction Standard Optional	316L SS Hastelloy C276, Hastelloy C22, Ti CP2 (others available)					
Weight - Approx (In Stainless Steel)	25 lbs (11.4 kg)	150 lbs (70 kg)	750 lbs (340 kg)	850 lbs (420 kg)	3,000 lbs (1,360 kg)	4,500 lbs (2,041 kg)

World-Class Service and Support

CINC's in-house team of industry experts is focused on finding creative solutions for all of your liquid processing requirements. Headquartered in Carson City, Nevada, our products are available worldwide to ensure quick shipping, which means you can depend on us each and every time.

Contact us today to learn more about CINC Industries high-quality products, and exceptional services and support.

CINC INDUSTRIES

2500 Arrowhead Drive, Unit #2

Carson City, Nevada 89706



www.CINCindustries.com

Outside U.S. **775-887-0787**

• Inside U.S. **1-888-380-CINC (2462)**